

RECEIVED
LARAMIE COUNTY
CHEYENNE, WY.

CERTIFIED LAND CORNER RECORDATION

'88 NOV 9 AM 9 00

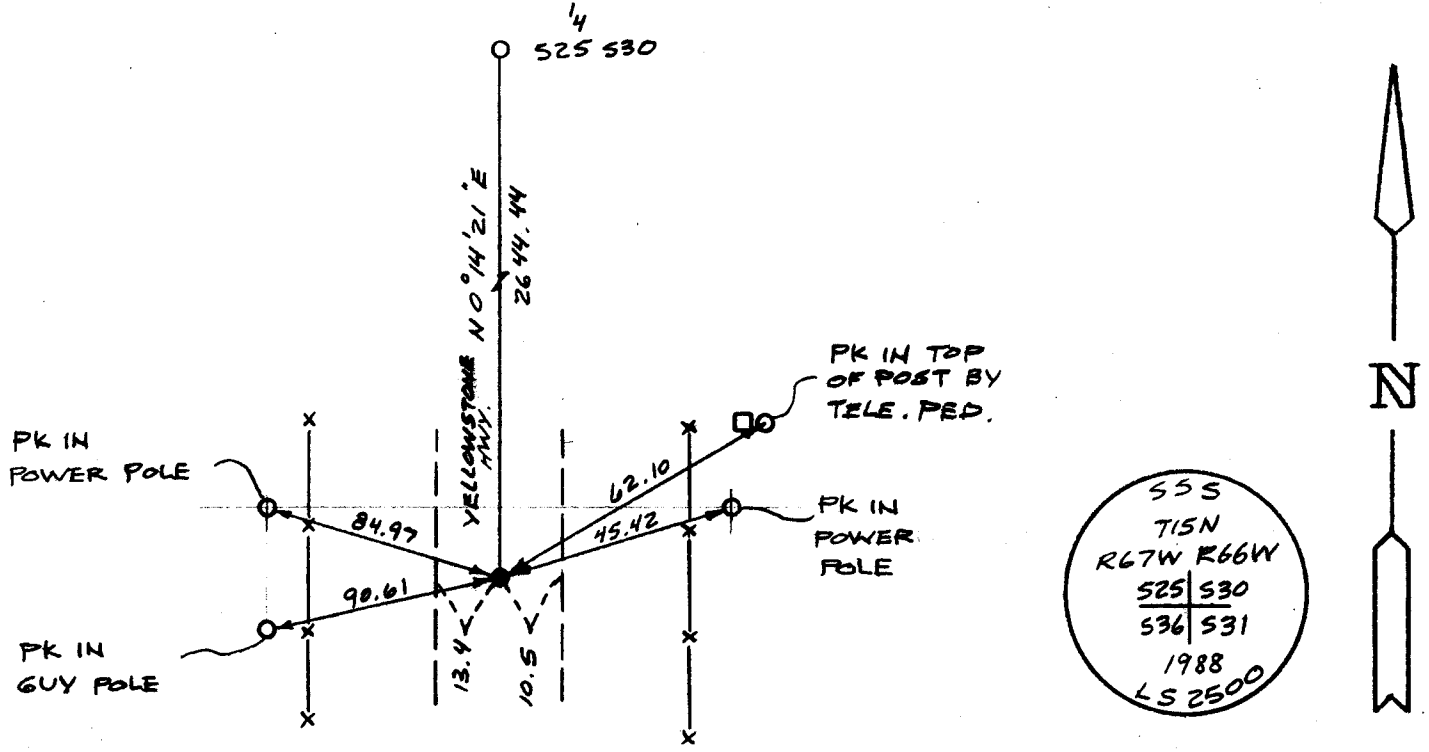
DESCRIPTION OF CORNER EVIDENCE FOUND, AND ORIGINAL RECORD (if known)

S.25 S.30
S.36 S.31
T.15N.
R.67W., R.66W.
6th P.M. Found no evidence of previous monumentation.
G.L.O. Record: Unknown.

DESCRIPTION OF MONUMENT AND ACCESSORIES ESTABLISHED TO PERPETUATE THE ORIGINAL LOCATION OF THIS CORNER:

At the corner: Set at proportionated distance a 5/8" x 18" rebar with 2" Aluminum Cap 0.05 below asphalt stamped as shown below.
Accessories : See ties below.

SKETCH, WITH COURSE AND DISTANCE TO ADJACENT CORNER IF DETERMINED IN THIS SURVEY. (May Sketch or Paste Reproduction on Reverse Side.)



I, John A. Steil certify that I have carefully performed or reviewed the work done on the diagrammed corner as reported on this recordation form and approve the same.

John A. Steil L.S. 2500
Signature of Surveyor Registration No.

STATE OF WYOMING,
Office of Clerk and Recorder,
County of _____

This "corner record" was filed for record on the _____ day of _____, 19____, was noted on the cross-index plat and is assigned page No. _____, in book No. _____.

County Official

| | | | | |
|-----------------|------|----------|----------|---------|
| Cross Index No. | V-1 | T. 15N | R. 66W | Mer.6th |
| | V-25 | T. 15N | R. 67W | Mer.6th |
| | | T. _____ | R. _____ | Mer. |
| | | T. _____ | R. _____ | Mer. |
| | | T. _____ | R. _____ | Mer. |
| | | T. _____ | R. _____ | Mer. |
| | | T. _____ | R. _____ | Mer. |